

PathFlow®: Future innovation of COVID-19 Lateral Flow Testing

PathFlow®: Future innovation of COVID-19 Lateral Flow Testing

Advancing technology and a unique wealth of knowledge are the driving forces behind innovative development in our PathFlow® portfolio of diagnostic tests for infectious diseases. This includes innovative product development in our PathFlow® portfolio – part of our Microgen Bioproducts division – where the new SARS-CoV-2 IgG rapid test is a natural addition to a fast-growing **range of assays** for the rapid diagnosis of infectious diseases.

PathFlow® COVID-19 testing solutions:

As the demands for COVID-19 testing continues to evolve, Novacyt are continuing to innovate and intend to develop an additional, next generation PathFlow® LFT, due to be launched in Q2 2021. This will be a pivotal step forward, not only in our understanding of the virus but also in our ability to combat it. Our latest addition to the range – the PathFlow® SARS-Cov-2 IgG – is an easy-to-use, rapid, lateral flow test for the detection of COVID-19 antibodies. We are also building our partnerships with academia, to help further clinical studies as we evolve the new product development programme.

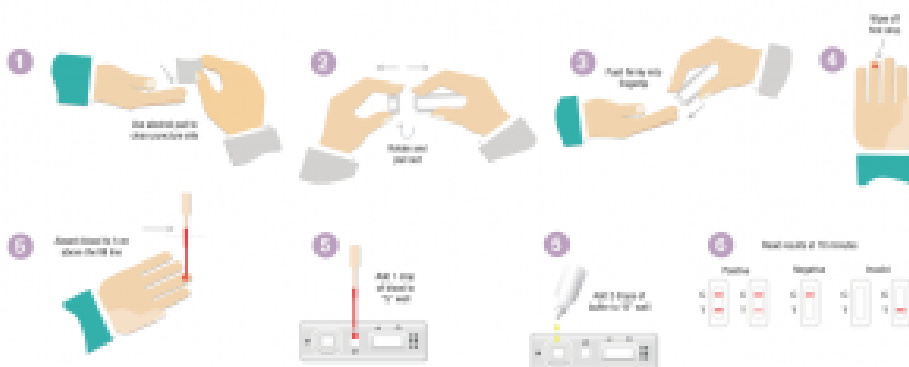


Diagram 1: The PathFlow® SARS-

Cov-2 IgG simple workflow

Putting our customers and their patients at the heart of innovation

Our R&D team benefit from the unrivalled expertise and knowledge base within the Novacyt Group. Our latest PathFlow® SARS-Cov-2 IgG assay is just the beginning of our lateral flow product development for COVID-19. Novacyt are committed to continuous product innovation that develops high performing rapid testing products that enable actionable results for nearer patient management and care to provide better patient outcomes. Our shared purpose is to be a world-leading innovator in diagnostic testing. We are all equally passionate about identifying patient need and overcoming significant healthcare challenges today and in the years ahead.